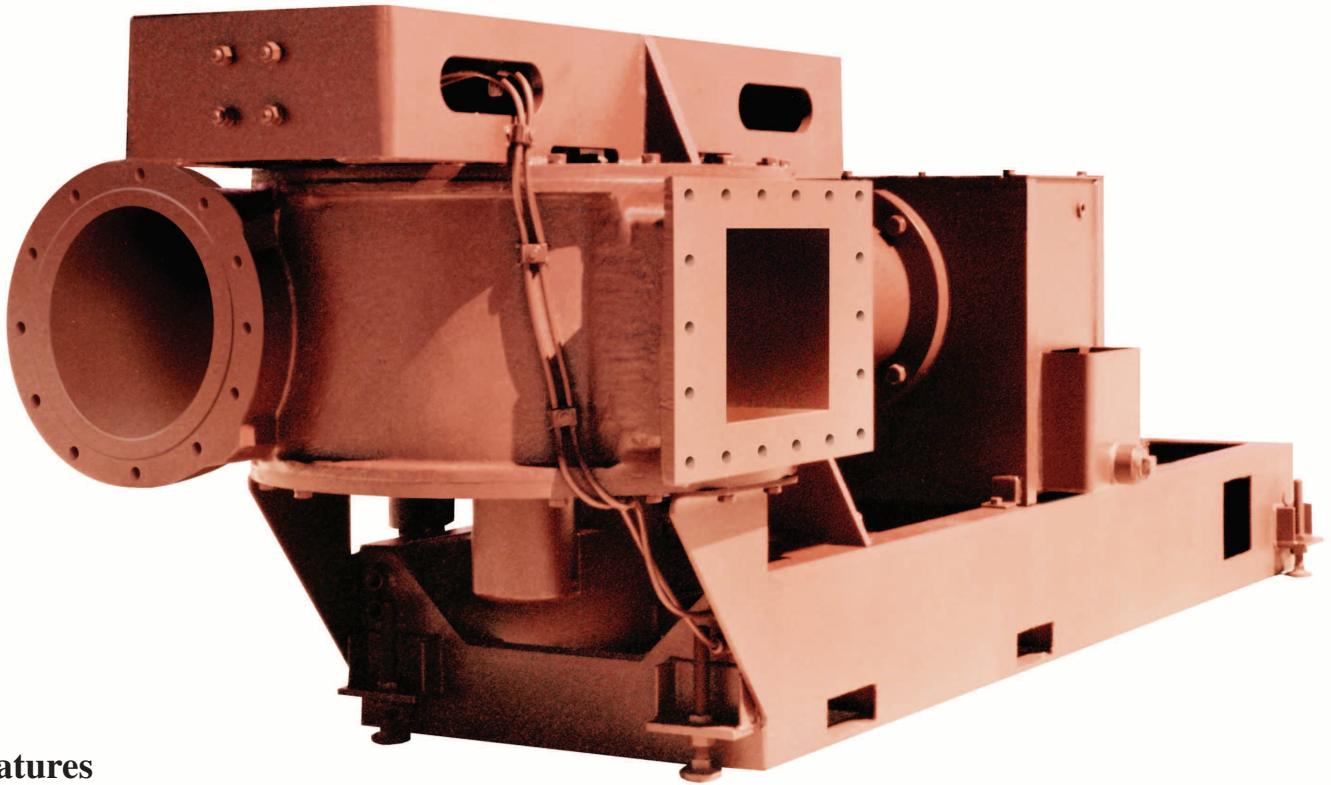
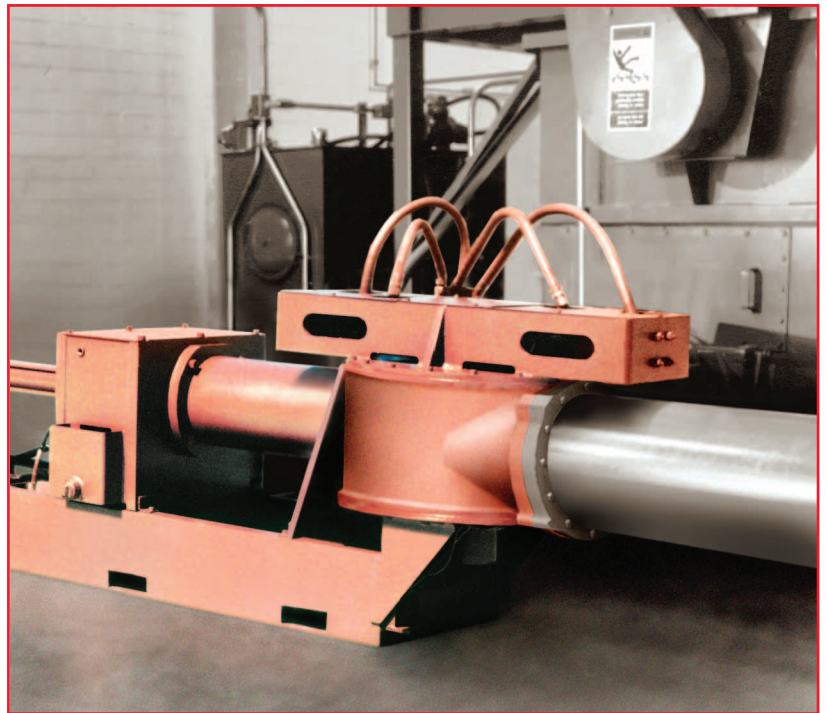


# THE DUPPS PUMP



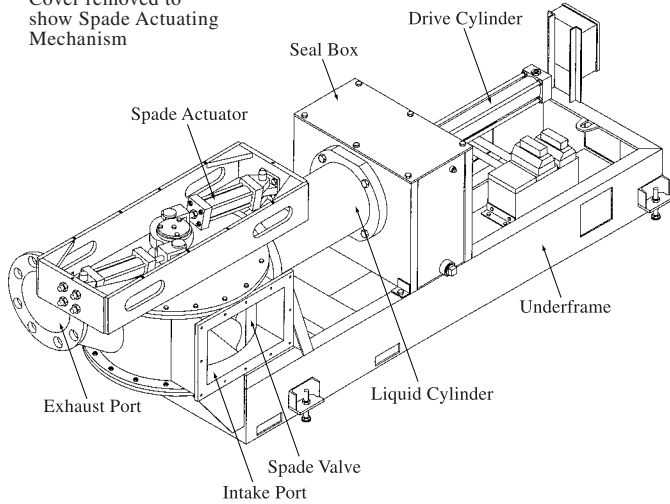
## Features

- Moves up to 70,000 lbs./hr. of by-products, including whole poultry offal and pre-crushed beef bones.
- Pumps hot or cold material.
- Self-clearing, non-clogging valve.
- State-of-the-art hydraulic system.
- Unique one-piece piston.
- Programmable controller.
- Simple, low-maintenance design.
- Allows metered pumping to feed or discharge material.
- No pressure loss at low speeds.
- Rotatable spade valve provides inlet position options.
- Unique water box system prevents product contamination.
- Self-priming cylinder.
- Hardened, wear-resistant materials for product contact parts.
- Full one-year warranty.
- Made in the U.S.A. by America's leading name in rendering equipment.

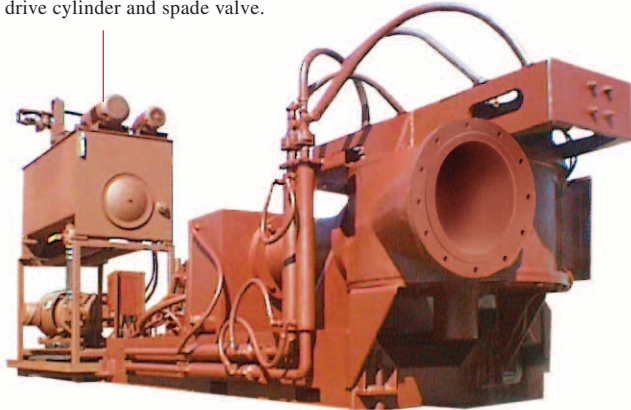


# THE DUPPS PUMP MAJOR COMPONENTS

**NOTE:**  
Cover removed to  
show Spade Actuating  
Mechanism



The hydraulic power unit contains the motive power and control system for the drive cylinder and spade valve.

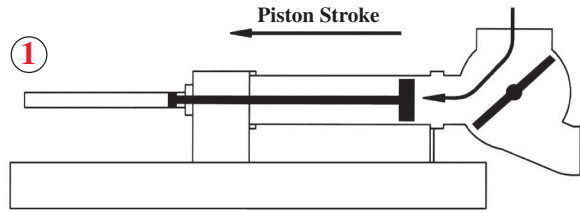


## SPECIFICATIONS

| PUMP SIZE |     | CAPACITY* |        | MOTOR |      | SUCTION PORT |           | DISCHARGE PORT |     | DISCHARGE PRESSURE |      |
|-----------|-----|-----------|--------|-------|------|--------------|-----------|----------------|-----|--------------------|------|
| in.       | mm  | lbs/hr.   | kg/hr. | HP    | KW   | in.          | mm        | in.            | mm  | P.S.I.             | BAR  |
| 12        | 305 | 47,000    | 21,325 | 50    | 37.3 | 12 x 20      | 305 x 508 | 12             | 305 | Up to 150          | 10.3 |
| 16/12     | 406 | 70,000    | 31,760 | 50    | 37.3 | 12 x 20      | 305 x 508 | 12             | 305 | Up to 150          | 10.3 |

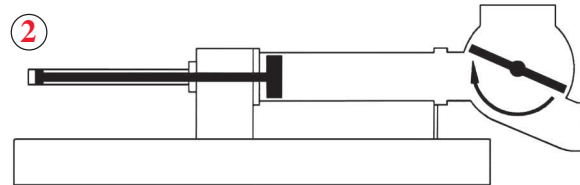
\* Capacities are for sized raw material

## OPERATING CYCLE



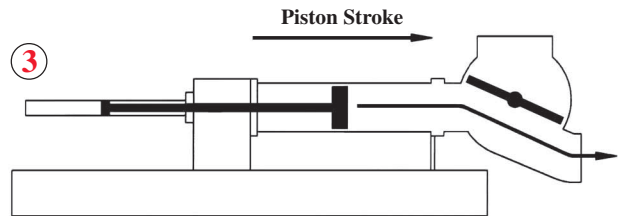
### Intake stroke

The valve spade is in the intake position. The piston draws material through the intake port to fill the pumping cylinder.



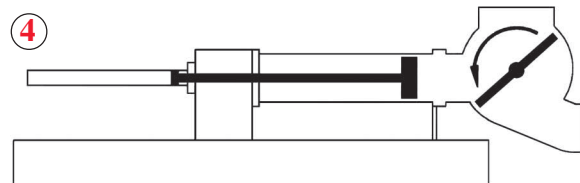
### Spade rotation

As soon as the intake stroke is completed, the valve spade rotates to the discharge position.



### Discharge stroke

The piston advances, pushing material through the valve body and out through the discharge port.



### Spade rotation

The valve spade rotates back to the intake position. The cycle begins again when the piston begins to withdraw into the pumping cylinder.

**The Dupps Company**



**Germantown, Ohio U.S.A.**

Phone: 937/855-6555 • Fax: 937/855-6554 • E-mail: info@dupps.com

Visit [www.dupps.com](http://www.dupps.com) to find in-depth descriptions of the world's leading protein recycling systems, equipment and service.

Due to ongoing product improvements, data shown here is subject to change without notice. Contact The Dupps Company for latest specifications.